

## Monthly Weather Summary in Thailand February 2017

February 2017, Thailand weather conditions were dominated by the high pressure areas from China which periodically extended its ridge to cover upper Thailand, the prevailing of northeast monsoon over the Gulf of Thailand and the southern Thailand and the upper-level westerly wind from Myanmar sometime moved to cover northern and northeastern parts. These caused generally cool weather in upper Thailand almost the month while cold to very cold weather covered the upper portion of northern and northeastern parts, especially in mountainous areas and on mountain tops. However, in late month, the temperature continuously increased in daytime and some area was extremely hot such as Thoen in Lampang province on February 24. Monthly mean temperature over Thailand was 0.1 °C below normal. For rainfall, most parts of the country got less rain than normal. There was isolated rain with a few thunderstorms and heavy rains in the upper Thailand and scattered to fairly widespread rain in southern Thailand mostly in the east coast. Monthly rainfall was below normal in the upper Thailand i.e. northern part 8.9 mm (86%), northeastern part 14.2 mm (77%), central part 10.0 mm (81%) and eastern part 6.1 mm (21%) while it was above normal in southern part (east coast) 9.8 mm (28%) and southern part (west coast) 0.6 mm (2%). The details are as follows:

**1–10 February:** The high pressure areas from China covered upper Thailand and the South China Sea throughout the month, the other ridge of active high pressure area extending to cover the mentioned area. In addition, the westerly wind at upper level prevailed over upper Thailand on February 3-5. These caused cool weather almost the whole areas with cold weather over northern part whereas cold weather in some areas of northeastern part. The minimum temperature of the period was 10.3 °C at Mae Sariang in Mae Hong Son province on February 8. In the mountainous areas and mountain tops, temperature climbed down to 2.8 °C at Royal Agricultural Station Angkhang, Fang in Chiang Mai province on February 6. For rainfall, under the received isolate rain in northeastern, central, eastern parts, Bangkok Metropolis and Vicinity February 2 and 3. In southern Thailand, under the influence of the moderate northeast monsoon prevailed over the Gulf of Thailand and southern Thailand during the first half of the period and on the last day of the period brought isolated to scattered rain with heavy rainfall in some areas. The highest daily rainfall of this period was 62.0 mm at Bang Kaeo in Phatthalung province on February 4.

**11-20 February :** Under the ridge of active high pressure area covered upper Thailand and the South China Sea during the first half of the period and later weakened associated with the upper-level westerly wind blew into the northern and northeastern parts during the second half of the period. These caused temperature relatively decreased over upper Thailand from last period with generally cool weather nearly the whole period and cold weather in the upper northern part while cold weather was present some areas of central and eastern parts especially in the northern part that experienced cold weather almost the whole areas during early period after that cold weather in several areas mainly in the upper portion. The minimum temperature of the period was 10.5 °C at Umphang in Tak province on February 14 and dropped to 5.0 °C in the area of mountain top at Phluang Wildlife

Sanctuary, Phu Rua in Loei province on February 14. For rainfall, due to the influence of the active northeast monsoon prevailing over the Gulf of Thailand and southern part during the first half of the week and later weakened. These caused isolate to scattered rain in southern Thailand nearly the whole period with heavy rainfall in some areas along east coast. The maximum daily rainfall was 63.5 mm at Su-ngai Kolok in Narathiwat province on February 18.

**21–28 February :** The upper Thailand was influenced by the upper level westerly wind and the weak to moderate high pressure area from china which covered the northeastern part and the South China Sea. These caused the temperature increased in most parts of Thailand but the weather could be cool in the morning, mainly in the northern and the northeastern parts. The minimum temperature of period was 11.9 C at Mae Sariang in Mae Hong Son province on February 23 and dropped to 5.6 C on mountain top at Royal Agricultural Station Angkhang in Chiang Mai province on the same day. During daytime, hot weather nearly the whole areas of upper Thailand mainly during and late period with extremely hot weather was 40.0 C at Thoen in Lampang province. Isolated rain with heavy rainfalls in some areas during early and mid-period, the maximum daily rainfall of 80.7 mm was recorded at Si Chomphu in Khon Kaen province on February 24. Thunderstorms and hail occurred at Burirum province on February 24 and at Chainat province on February 25. Under the influence of the northeast monsoon which prevailed over The Gulf of Thailand and southern Thailand and strengthen during middle and late period, southern part obtained isolated rain with heavy rainfall in some areas during early and mid-period along west coast after that increasing in rainfall with fairly widespread to widespread rain and heavy rainfall in some areas. The highest daily rainfall was 71.0 mm at Ko Samui in Surat Thani province on February 28.

---

**Note :** Rainfall, temperatures and natural disasters in this report were updated up to March 6, 2017.

Climatological Center  
Meteorological Development Bureau  
Meteorological Department

Monthly Current Report  
Rainfall and Accumulative Rainfall  
February 2017

Northern Thailand

Station	Temperature ( °c)		Rainfall (mm)		Accumulative rainfall (mm) Since 1 January	
	Mean	Above or below normal	Actual	Above or below normal	Actual	Above or below normal
Chiang Rai	22.8	1.2	0.0	-13.8	74.5	53.2
Mae Hong Son	23.2	0.6	0.0	-6.0	11.1	-1.3
Phayao	23.2	0.4	0.0	-9.2	63.0	48.1
Chiang Mai	25.0	1.1	0.0	-8.9	27.4	14.3
Tha Wang Pha	22.8	0.3	0.0	-9.0	37.8	21.8
Nan	24.1	0.5	0.0	-11.9	43.8	27.5
Lamphun	24.4	0.1	0.0	-4.9	36.4	28.7
Lampang	24.7	0.0	0.0	-8.8	80.4	68.8
Mae Sariang	22.5	0.3	0.0	-6.5	9.9	1.9
Phrae	24.5	-0.1	0.0	-8.8	27.1	12.5
Uttaradit	26.3	0.2	0.0	-14.5	40.3	20.3
Bhumibol Dam	25.9	-0.8	0.0	-6.9	31.7	22.2
Tak	26.3	-1.0	0.0	-8.7	43.9	33.1
Mae Sot	25.3	0.8	0.0	-8.2	12.3	2.4
Umphang	22.4	0.8	0.0	-9.1	7.6	-8.3
Phitsanulok	26.6	-0.4	20.5	7.0	42.4	25.0
Lom Sak	26.3	0.4	0.7	-16.4	4.1	-17.8
Phetchabun	26.6	0.1	3.8	-12.3	61.1	39.4
Wichian Buri	27.3	-0.2	0.0	-12.6	4.9	-15.4
Kamphaeng Phet	26.8	0.0	4.5	-8.6	16.2	0.8
Over the area	24.9	0.3	1.5	-8.9	33.8	18.8
				-86%		125%

Northeastern Thailand

Station	Temperature ( °c)		Rainfall (mm)		Accumulative rainfall (mm) Since 1 January	
	Mean	Above or below normal	Actual	Above or below normal	Actual	Above or below normal
Nong Khai	25.0	0.1	0.0	-17.3	2.6	-23.0
Loei	23.9	-0.3	0.1	-16.0	10.3	-12.0
Udon Thani	24.6	-0.7	11.8	-10.2	13.6	-14.7
Nakhon Phanom	24.2	-0.2	23.0	-8.0	23.1	-10.9
Sakon Nakhon	23.7	-0.7	15.4	-13.9	17.4	-16.6
Mukdahan	24.3	-0.6	0.6	-16.8	0.9	-20.2
Khon Kaen	25.3	-0.6	4.6	-16.8	5.8	-19.6
Kosum Phisai	25.5	-0.3	0.1	-14.9	6.5	-12.0
Roi Et	25.4	-0.3	4.5	-14.7	6.6	-16.2
Chaiyaphum	26.3	-0.4	0.2	-14.1	1.5	-17.3
Ubon Ratchathani	26.2	-0.3	0.2	-15.2	0.8	-16.6
Tha Tum	25.5	-0.7	4.5	-11.6	4.5	-16.7
Surin	25.8	-0.8	2.4	-9.1	6.3	-10.8
Nakhon Ratchasima	26.3	-0.6	0.1	-16.0	6.1	-18.2
Chok Chai	26.0	-0.5	0.3	-14.5	9.4	-9.4
Nang Rong	25.2	-1.2	1.7	-17.9	3.5	-20.8
Over the area	25.2	-0.5	4.3	-14.2	7.4	-15.9
				-77%		-68%

- NOTES :
- 1) Mean temperature is the average of daily dry-bulb temperature
  - 2) "T" is trace, rainfall amount less than 0.1 mm.
  - 3) "blank" is incomplete data.
  - 4) Temperature and rainfall are preliminary data.

Monthly Current Report  
Rainfall and Accumulative Rainfall  
February 2017

Central Thailand

Station	Temperature ( °c)		Rainfall (mm)		Accumulative rainfall (mm) Since 1 January	
	Mean	Above or below normal	Actual	Above or below normal	Actual	Above or below normal
Nakhon Sawan	27.2	-0.9	9.2	-2.7	47.8	31.6
Bua Chum	26.7	-0.7	3.2	-5.9	4.0	-11.8
Lop Buri	28.0	-0.1	0.0	-6.9	14.1	1.5
Suphan Buri	27.6	0.2	0.0	-6.9	14.0	3.4
Thong Pha Phum	26.6	-0.2	5.7	-10.7	25.7	3.9
Kanchanaburi	28.1	0.1	0.0	-18.2	47.7	26.2
Bangkok Airport	28.4	0.1	0.0	-9.0	17.1	-3.3
Bangkok Metropolis	28.9	0.6	0.0	-20.0	45.1	11.8
Over the area	27.7	-0.1	2.3	-10.0 -81%	26.9	7.9 42%

Eastern Thailand

Station	Temperature ( °c)		Rainfall (mm)		Accumulative rainfall (mm) Since 1 January	
	Mean	Above or below normal	Actual	Above or below normal	Actual	Above or below normal
Prachin Buri	28.4	0.2	5.1	-10.7	10.0	-13.5
Kabin Buri	27.1	-0.7	1.4	-23.5	12.2	-21.7
Aranyaprathet	28.1	-0.1	74.1	46.5	138.8	105.8
Chon Buri	28.4	0.4	0.5	-13.8	59.6	35.4
Ko Sichang	27.6	0.0	0.0	-15.7	123.8	97.2
Pattaya	27.4	0.1	29.7	15.4	124.2	94.3
Sattahip	26.4	-1.1	27.1	7.7	125.0	80.0
Rayong	27.2	-0.7	1.0	-35.5	108.1	50.9
Chanthaburi	27.8	0.5	15.1	-21.3	85.9	30.8
Khlong Yai	27.4	0.2	76.3	-9.7	113.2	-10.0
Over the area	27.6	-0.1	23.0	-6.1 -21%	90.1	44.9 99%

- NOTES :
- 1) Mean temperature is the average of daily dry-bulb temperature
  - 2) "T" is trace, rainfall amount less than 0.1 mm.
  - 3) "blank" is incomplete data.
  - 4) Temperature and rainfall are preliminary data.

Monthly Current Report  
Rainfall and Accumulative Rainfall  
February 2017

Southern Thailand, east coast

Station	Temperature ( °c)		Rainfall (mm)		Accumulative rainfall (mm) Since 1 January	
	Mean	Above or below normal	Actual	Above or below normal	Actual	Above or below normal
Phetchaburi	27.5	0.3	0.0	-3.9	168.8	153.5
Hua Hin	27.2	0.0	4.7	-10.6	243.9	216.8
Prachuap Khiri Khan	26.4	-0.2	39.7	17.9	480.9	434.7
Chumphon	26.6	-0.1	99.3	54.6	692.7	588.6
Surat Thani	26.5	0.1	19.8	7.5	331.2	282.1
Ko Samui	27.2	-0.2	115.2	60.8	729.3	588.7
Nakhon Si Thammarat	26.4	-0.1	115.3	47.1	1888.0	1674.4
Songkhla	27.6	0.1	22.7	-25.9	704.9	581.5
Hat Yai Airport	27.1	0.4	7.0	-17.4	422.0	343.8
Pattani Airport	27.0	0.5	21.5	-10.5	619.4	536.5
Narathiwat	27.3	0.7	42.3	-11.4	1313.7	1158.4
Over the area	27.0	0.2	44.3	9.8 28%	690.4	596.2 633%

Southern Thailand, west coast

Station	Temperature ( °c)		Rainfall (mm)		Accumulative rainfall (mm) Since 1 January	
	Mean	Above or below normal	Actual	Above or below normal	Actual	Above or below normal
Ranong	27.2	-0.3	16.2	0.2	489.0	463.0
Takua Pa	27.0	0.0	86.2	45.1	213.9	133.4
Phuket	28.9	0.2	26.2	2.3	350.6	296.4
Phuket Airport	27.7	0.0	52.2	25.0	253.1	189.7
Ko Lanta	28.0	-0.2	4.4	-13.6	255.1	222.2
Trang Airport	27.7	0.2	10.4	-10.4	366.4	313.1
Satun	28.2	0.1	1.0	-44.8	206.6	139.6
Over the area	27.8	0.0	28.1	0.6 2%	305.0	251.1 466%

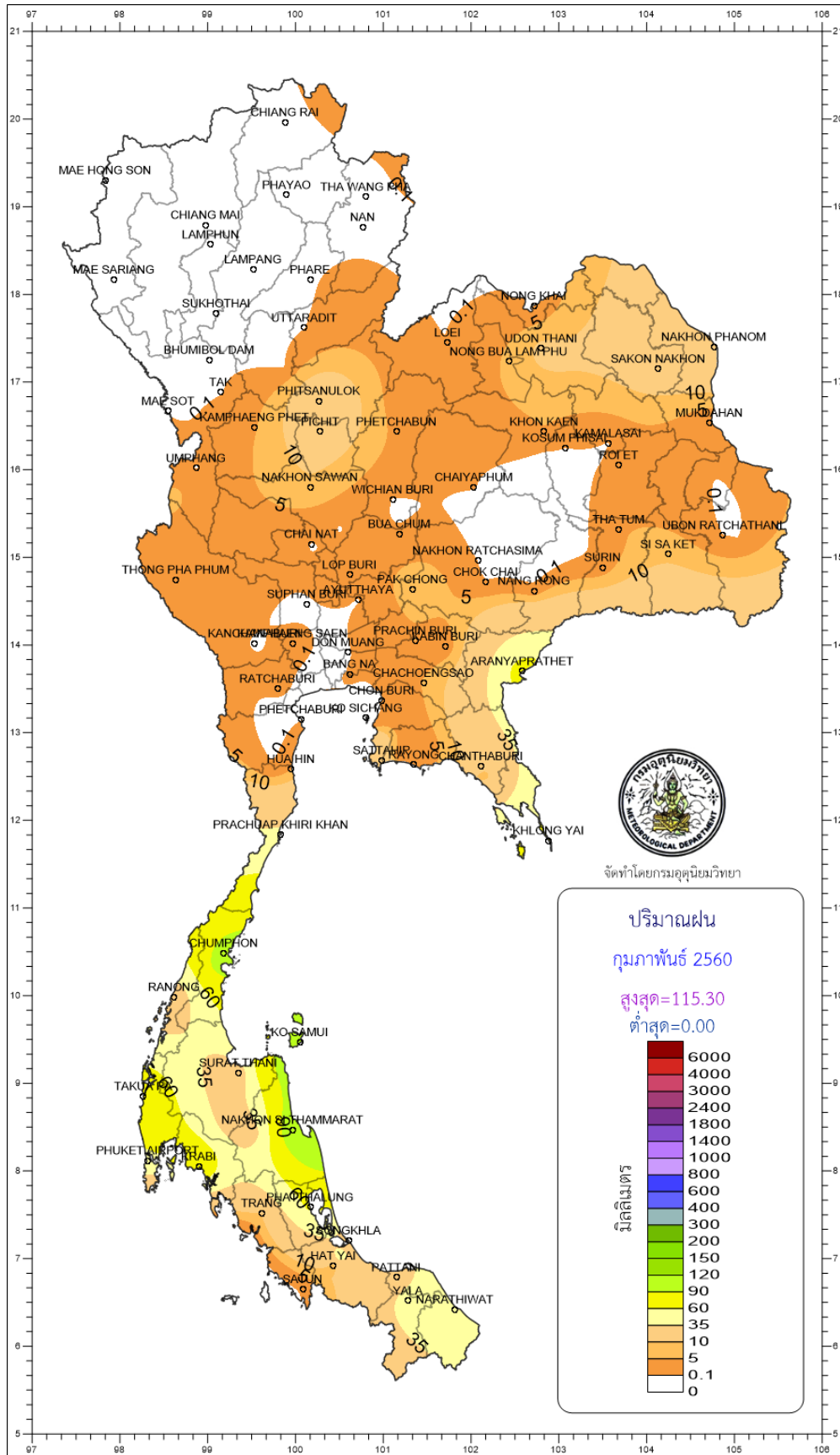
- NOTES :
- 1) Mean temperature is the average of daily dry-bulb temperature
  - 2) "T" is trace, rainfall amount less than 0.1 mm.
  - 3) "blank" is incomplete data.
  - 4) Temperature and rainfall are preliminary data.

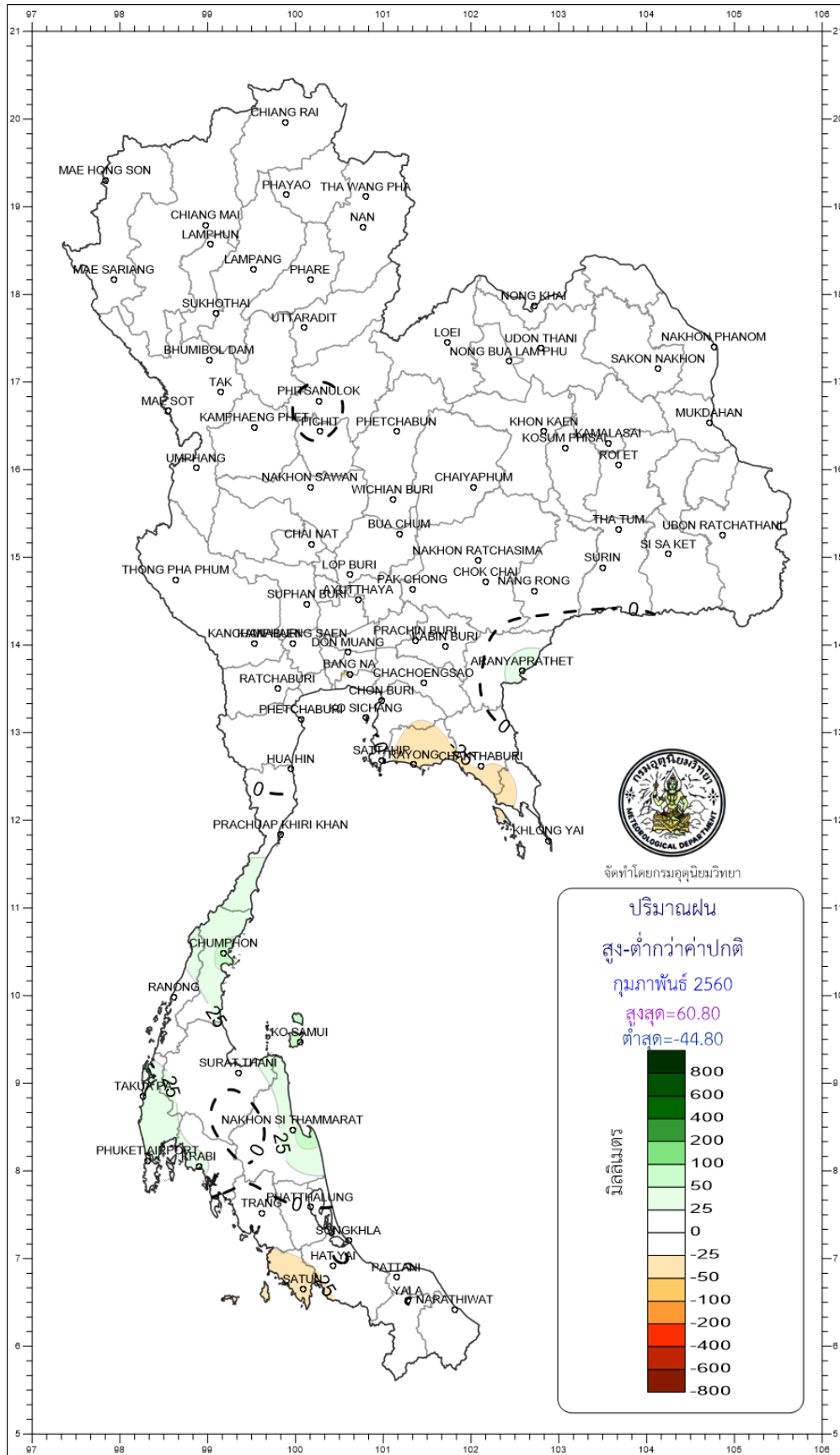
**Monthly Current Report**

**February 2017**

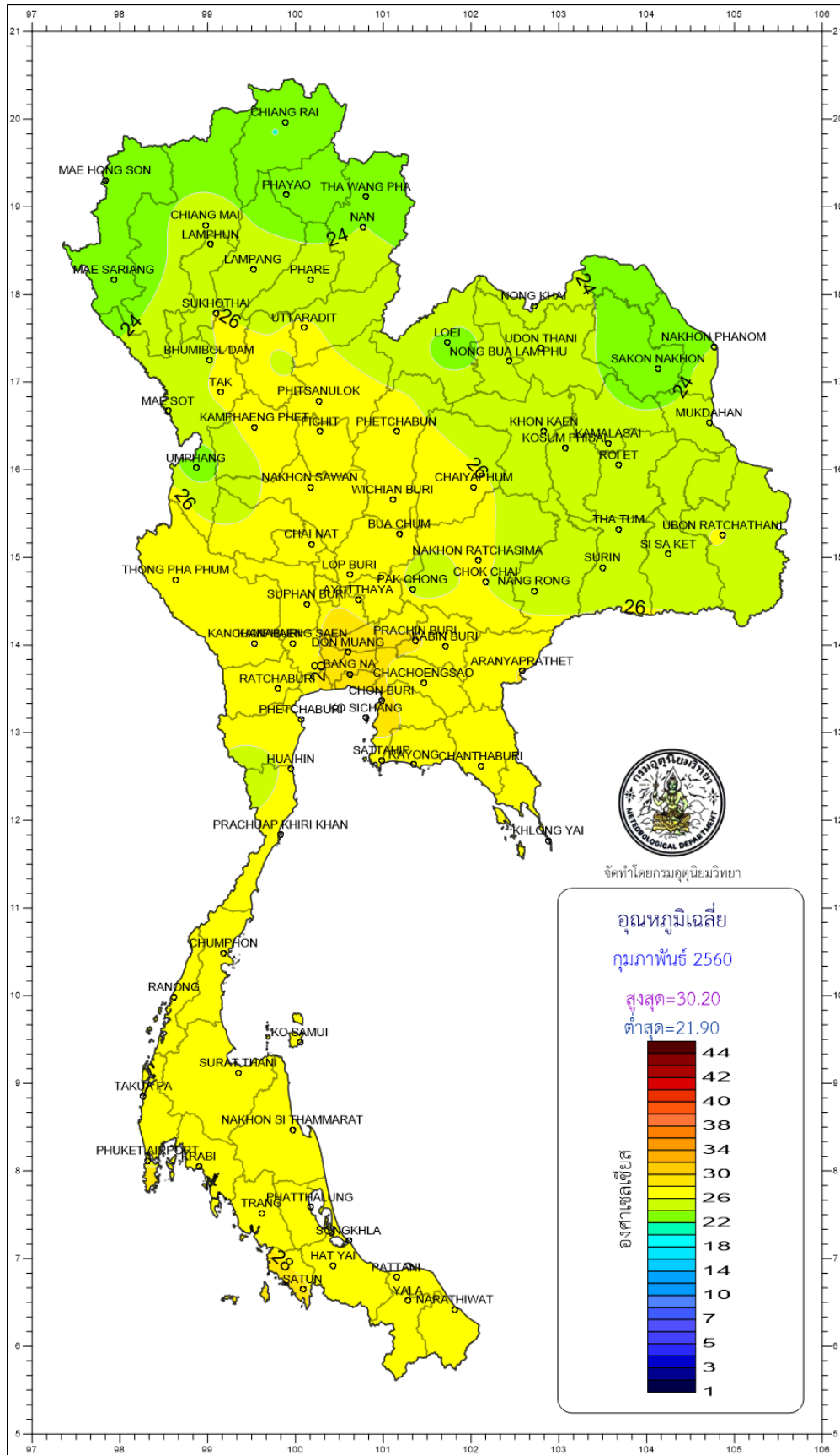
Region	Station	Temperature (°c)		Rainfall (mm)		Accumulative rainfall (mm) Since 1 January	
		Mean	Above or below normal	Actual	Above or below normal	Actual	Above or below normal
North	Chiang Rai	22.8	1.2	0.0	-13.8	74.5	53.2
	Mae Hong Son	23.2	0.6	0.0	-6.0	11.1	-1.3
	Phayao	23.2	0.4	0.0	-9.2	63.0	48.1
	Chiang Mai	25.0	1.1	0.0	-8.9	27.4	14.3
	Tha Wang Pha	22.8	0.3	0.0	-9.0	37.8	21.8
	Nan	24.1	0.5	0.0	-11.9	43.8	27.5
	Lamphun	24.4	0.1	0.0	-4.9	36.4	28.7
	Lampang	24.7	0.0	0.0	-8.8	80.4	68.8
	Mae Sariang	22.5	0.3	0.0	-6.5	9.9	1.9
	Phrae	24.5	-0.1	0.0	-8.8	27.1	12.5
	Uttaradit	26.3	0.2	0.0	-14.5	40.3	20.3
	Bhumibol Dam	25.9	-0.8	0.0	-6.9	31.7	22.2
	Tak	26.3	-1.0	0.0	-8.7	43.9	33.1
	Mae Sot	25.3	0.8	0.0	-8.2	12.3	2.4
	Umphang	22.4	0.8	0.0	-9.1	7.6	-8.3
	Phitsanulok	26.6	-0.4	20.5	7.0	42.4	25.0
	Lom Sak	26.3	0.4	0.7	-16.4	4.1	-17.8
	Phetchabun	26.6	0.1	3.8	-12.3	61.1	39.4
	Wichian Buri	27.3	-0.2	0.0	-12.6	4.9	-15.4
	Kamphaeng Phet	26.8	0.0	4.5	-8.6	16.2	0.8
Northeast	Nong Khai	25.0	0.1	0.0	-17.3	2.6	-23.0
	Loei	23.9	-0.3	0.1	-16.0	10.3	-12.0
	Udon Thani	24.6	-0.7	11.8	-10.2	13.6	-14.7
	Nakhon Phanom	24.2	-0.2	23.0	-8.0	23.1	-10.9
	Sakon Nakhon	23.7	-0.7	15.4	-13.9	17.4	-16.6
	Mukdahan	24.3	-0.6	0.6	-16.8	0.9	-20.2
	Khon Kaen	25.3	-0.6	4.6	-16.8	5.8	-19.6
	Kosum Phisai	25.5	-0.3	0.1	-14.9	6.5	-12.0
	Roi Et	25.4	-0.3	4.5	-14.7	6.6	-16.2
	Chaiyaphum	26.3	-0.4	0.2	-14.1	1.5	-17.3
	Ubon Ratchathani	26.2	-0.3	0.2	-15.2	0.8	-16.6
	Tha Tum	25.5	-0.7	4.5	-11.6	4.5	-16.7
	Surin	25.8	-0.8	2.4	-9.1	6.3	-10.8
	Nakhon Ratchasima	26.3	-0.6	0.1	-16.0	6.1	-18.2
	Chok Chai	26.0	-0.5	0.3	-14.5	9.4	-9.4
Nang Rong	25.2	-1.2	1.7	-17.9	3.5	-20.8	
Central	Nakhon Sawan	27.2	-0.9	9.2	-2.7	47.8	31.6
	Bua Chum	26.7	-0.7	3.2	-5.9	4.0	-11.8
	Lop Buri	28.0	-0.1	0.0	-6.9	14.1	1.5
	Suphan Buri	27.6	0.2	0.0	-6.9	14.0	3.4
	Thong Pha Phum	26.6	-0.2	5.7	-10.7	25.7	3.9
	Kanchanaburi	28.1	0.1	0.0	-18.2	47.7	26.2
	Bangkok Airport	28.4	0.1	0.0	-9.0	17.1	-3.3
	Bangkok Metropolis	28.9	0.6	0.0	-20.0	45.1	11.8
East	Prachin Buri	28.4	0.2	5.1	-10.7	10.0	-13.5
	Kabin Buri	27.1	-0.7	1.4	-23.5	12.2	-21.7
	Aranyaprathet	28.1	-0.1	74.1	46.5	138.8	105.8
	Chon Buri	28.4	0.4	0.5	-13.8	59.6	35.4
	Ko Sichang	27.6	0.0	0.0	-15.7	123.8	97.2
	Pattaya	27.4	0.1	29.7	15.4	124.2	94.3
	Sattahip	26.4	-1.1	27.1	7.7	125.0	80.0
	Rayong	27.2	-0.7	1.0	-35.5	108.1	50.9
	Chanthaburi	27.8	0.5	15.1	-21.3	85.9	30.8
	Khlong Yai	27.4	0.2	76.3	-9.7	113.2	-10.0
South (East Coast)	Phetchaburi	27.5	0.3	0.0	-3.9	168.8	153.5
	Hua Hin	27.2	0.0	4.7	-10.6	243.9	216.8
	Prachuap Khiri Khan	26.4	-0.2	39.7	17.9	480.9	434.7
	Chumphon	26.6	-0.1	99.3	54.6	692.7	588.6
	Surat Thani	26.5	0.1	19.8	7.5	331.2	282.1
	Ko Samui	27.2	-0.2	115.2	60.8	729.3	588.7
	Nakhon Si Thammarat	26.4	-0.1	115.3	47.1	1888.0	1674.4
	Songkhla	27.6	0.1	22.7	-25.9	704.9	581.5
	Hat Yai Airport	27.1	0.4	7.0	-17.4	422.0	343.8
	Pattani Airport	27.0	0.5	21.5	-10.5	619.4	536.5
Narathiwat	27.3	0.7	42.3	-11.4	1313.7	1158.4	
South (West Coast)	Ranong	27.2	-0.3	16.2	0.2	489.0	463.0
	Takua Pa	27.0	0.0	86.2	45.1	213.9	133.4
	Phuket	28.9	0.2	26.2	2.3	350.6	296.4
	Phuket Airport	27.7	0.0	52.2	25.0	253.1	189.7
	Ko Lanta	28.0	-0.2	4.4	-13.6	255.1	222.2
	Trang Airport	27.7	0.2	10.4	-10.4	366.4	313.1
Satun	28.2	0.1	1.0	-44.8	206.6	139.6	
	Over the area	26.2	-0.1	14.3	-6.1	161.7	124.3
					-30%		332%

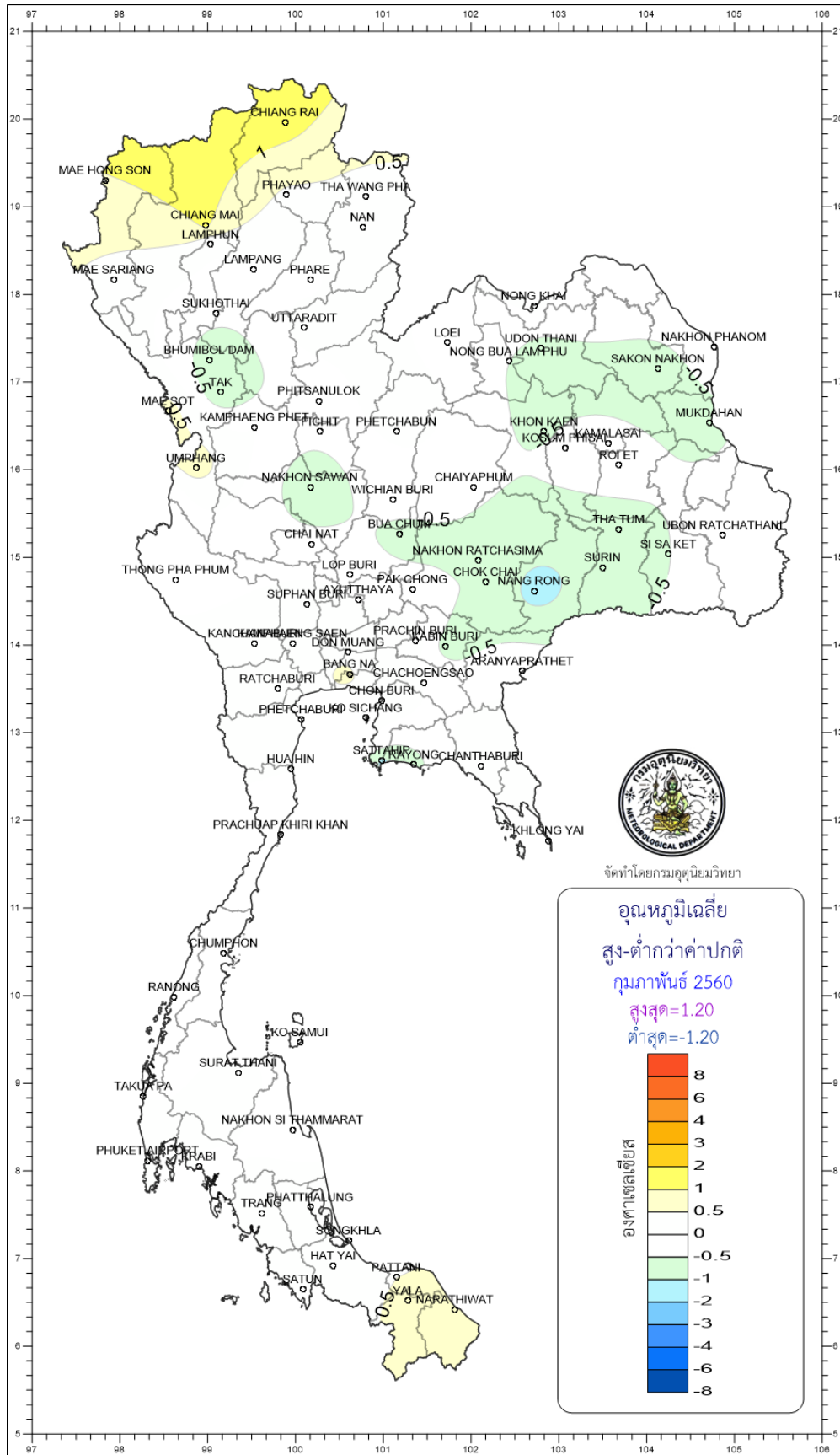
- NOTES :
- 1) Mean temperature is the average of daily dry-bulb temperature
  - 2) "T" is trace, rainfall amount less than 0.1 mm.
  - 3) "blank" is incomplete data
  - 4) Temperature and rainfall are preliminary data











จัดทำโดยกรมอุตุนิยมวิทยา